



Company : Woodside Energy Limited

Well : Somerset-1

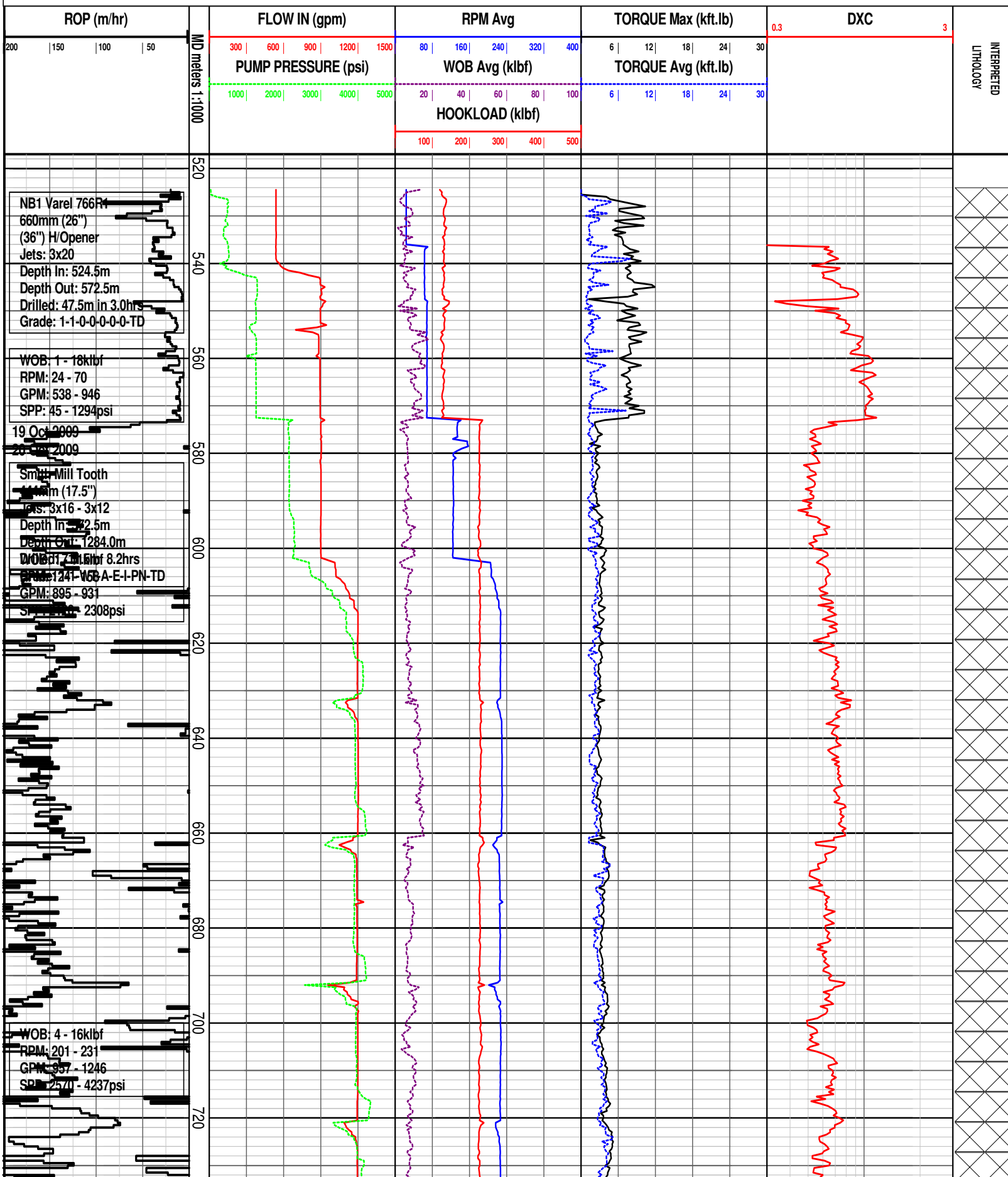
Interval : 517.00 - 2920.91 meters

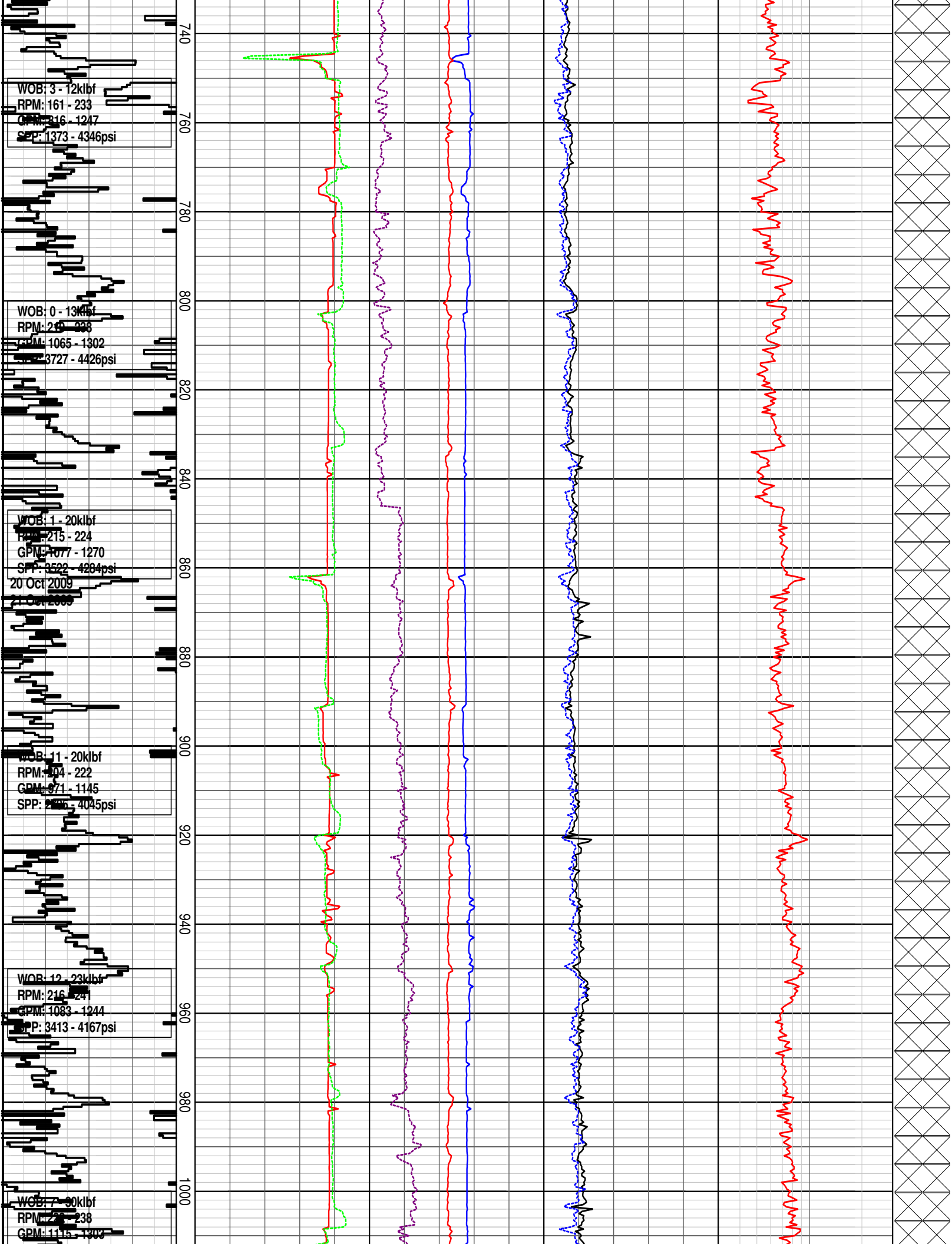
Created : 03/Nov/2009 5:55:14 AM

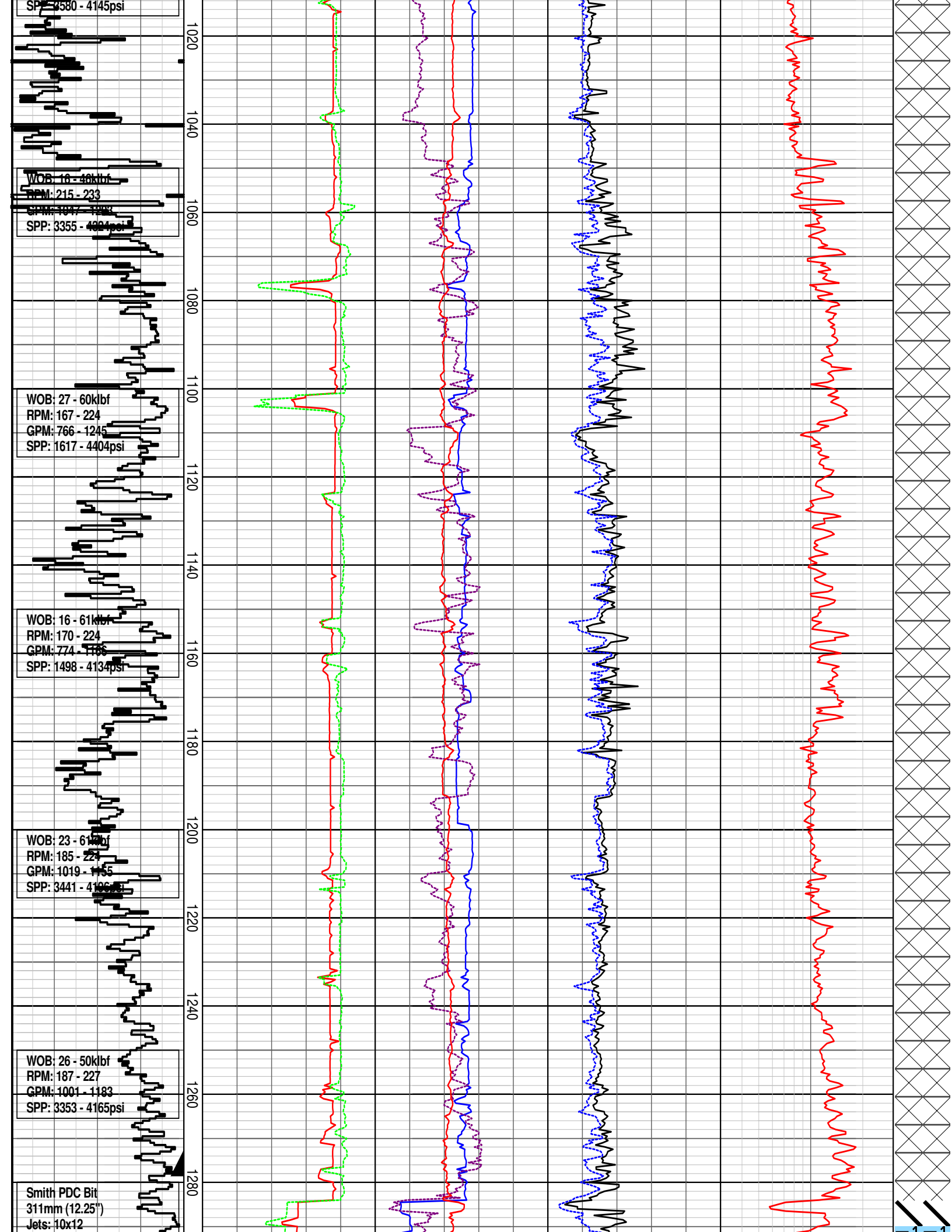


INTEQ

## DRILLING DATA PLOT







Depth In: 1284.0m  
Depth Out: 2912.0m  
Drilled: 1626.0m in 42.4m  
Grade: 1-2-WT-3-X

WOB: 8 - 62klbf  
RPM: 58 - 223  
GPM: 690 - 1158  
SPP: 1827 - 4188psi

WOB: 15 - 54klbf  
RPM: 109 - 177  
GPM: 716 - 1060  
SPP: 2151 - 4186psi

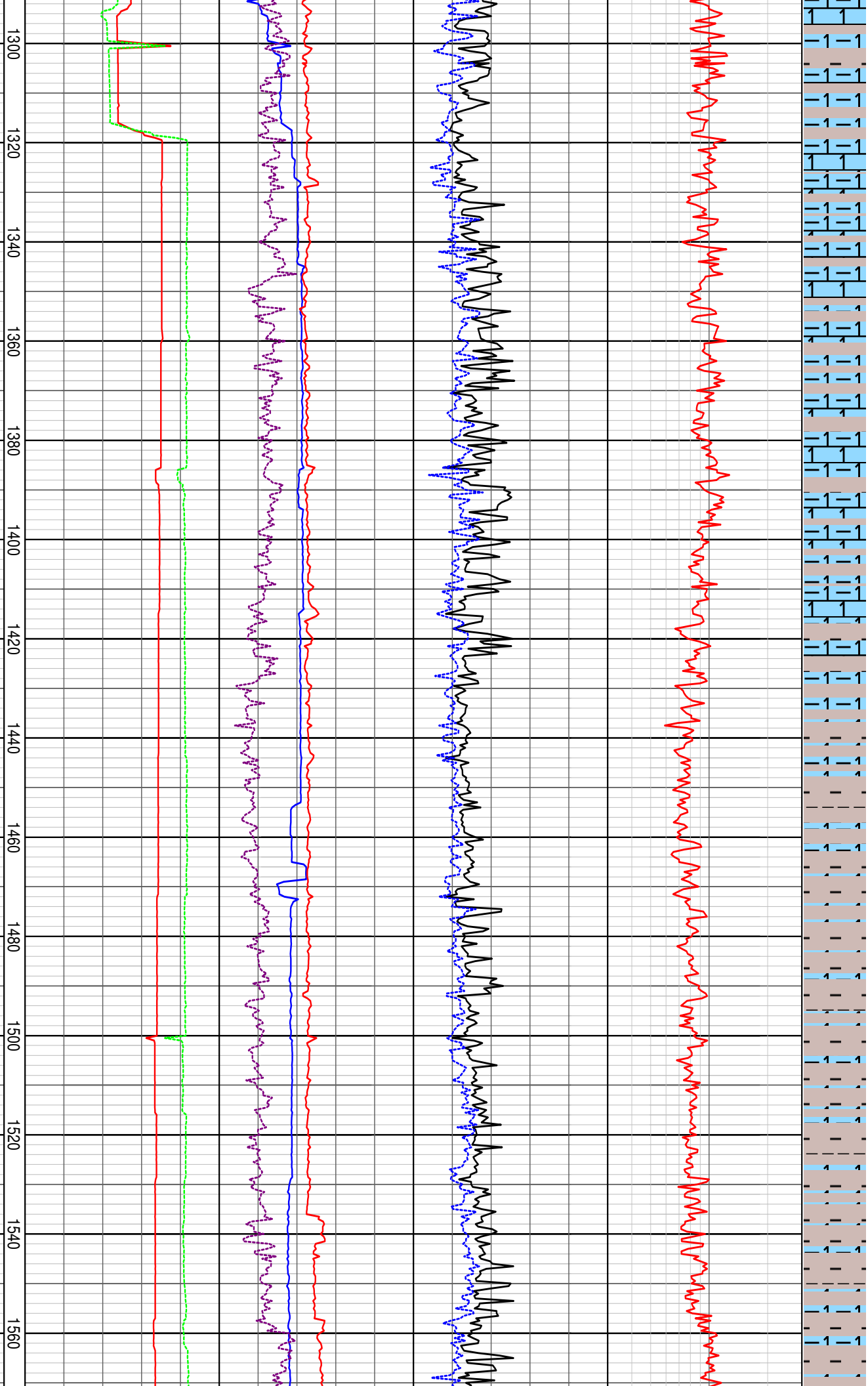
WOB: 16 - 34klbf  
RPM: 161 - 174  
GPM: 1008 - 1063  
SPP: 3916 - 4244psi

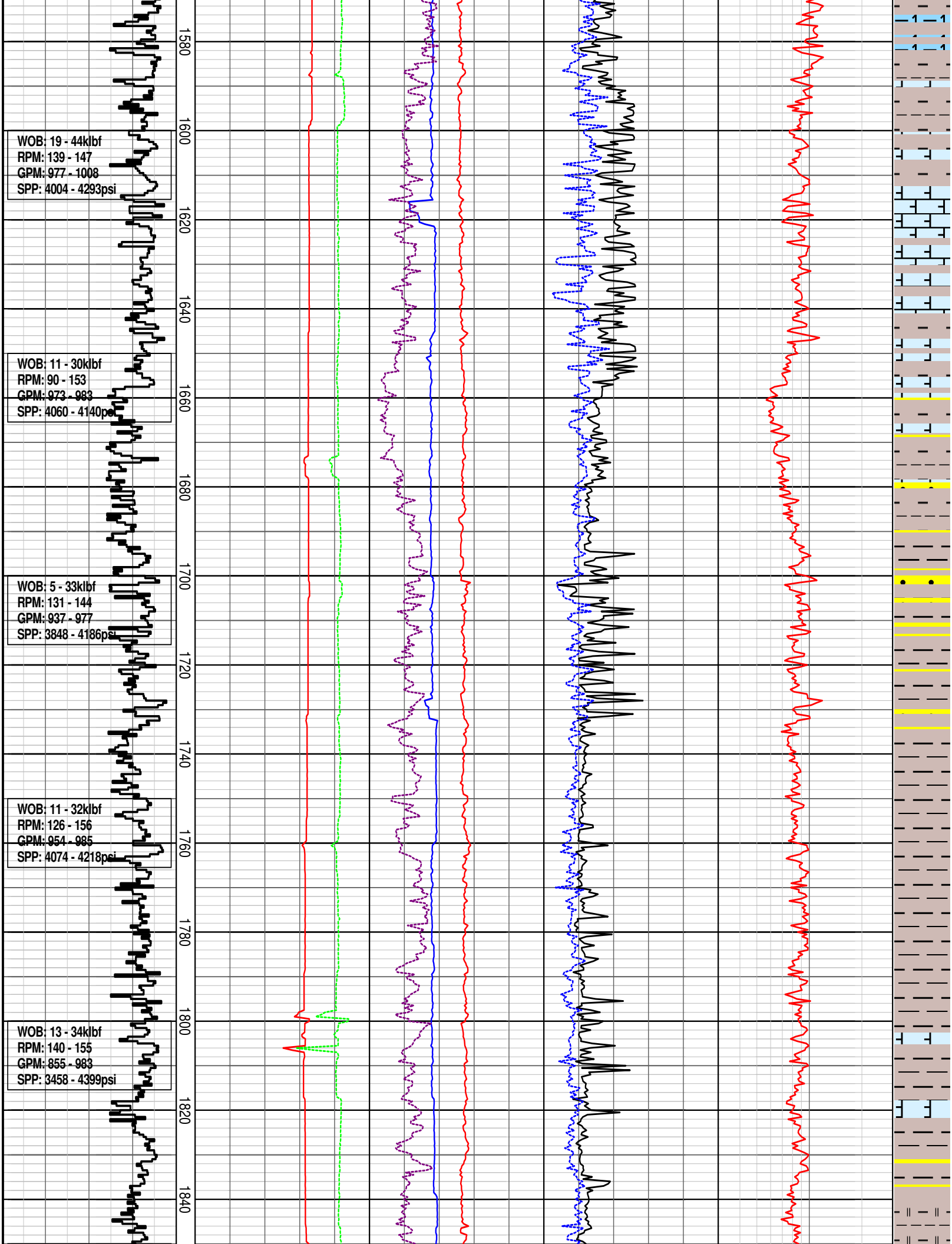
WOB: 4 - 49klbf  
RPM: 163 - 174  
GPM: 1028 - 1039  
SPP: 4095 - 4179psi

WOB: 11 - 26klbf  
RPM: 119 - 179  
GPM: 1019 - 1030  
SPP: 4088 - 4191psi

WOB: 13 - 29klbf  
RPM: 140 - 151  
GPM: 936 - 1019  
SPP: 3603 - 4156psi

25 Oct 2009  
26 Oct 2009





WOB: 15 - 36klbf  
RPM: 141 - 156  
GPM: 758 - 981  
SPP: 2893 - 4387psi

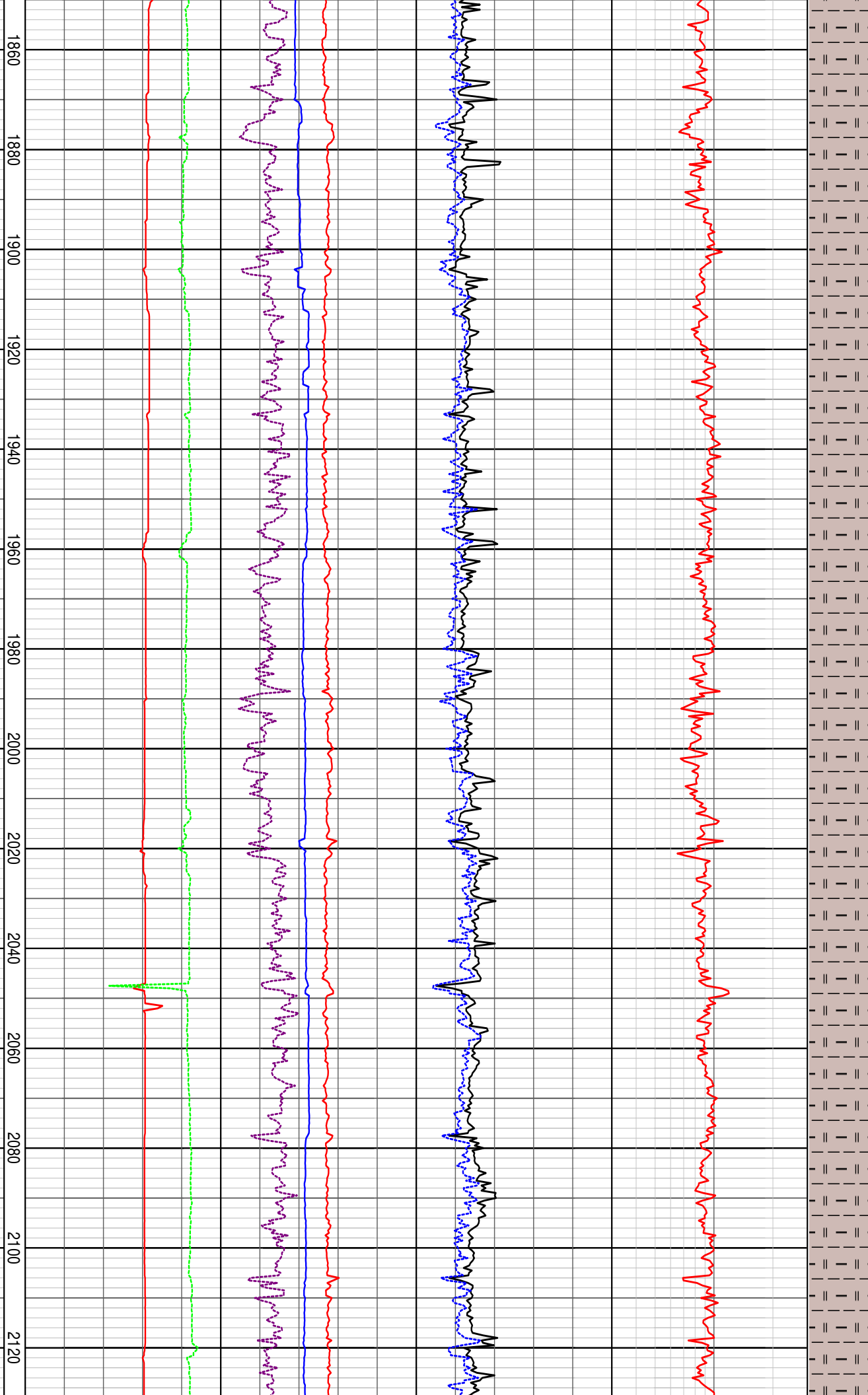
WOB: 10 - 34klbf  
RPM: 151 - 166  
GPM: 921 - 979  
SPP: 3922 - 4192psi

WOB: 11 - 36klbf  
RPM: 151 - 181  
GPM: 905 - 953  
SPP: 3911 - 4243psi

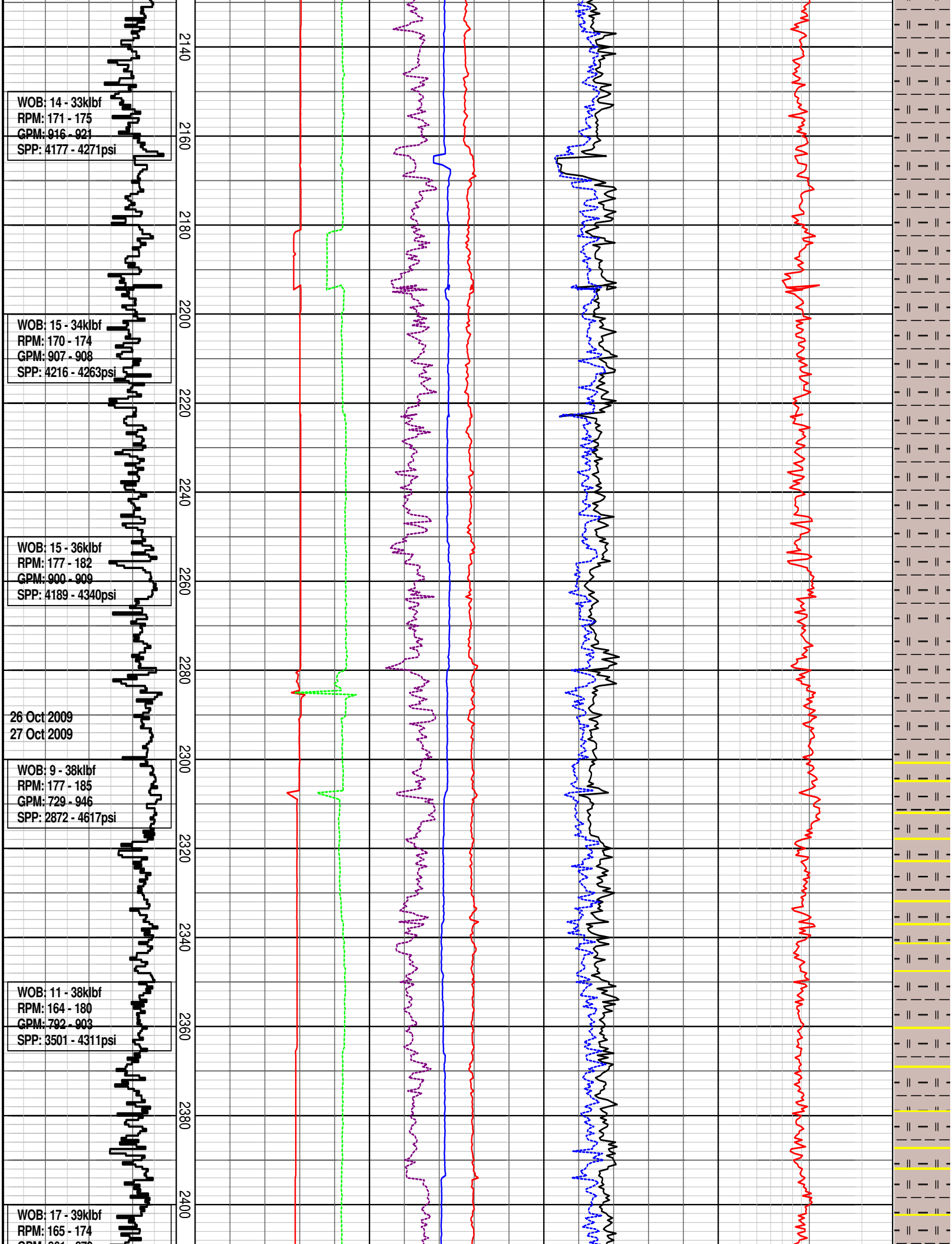
WOB: 7 - 36klbf  
RPM: 166 - 177  
GPM: 901 - 944  
SPP: 3937 - 4245psi

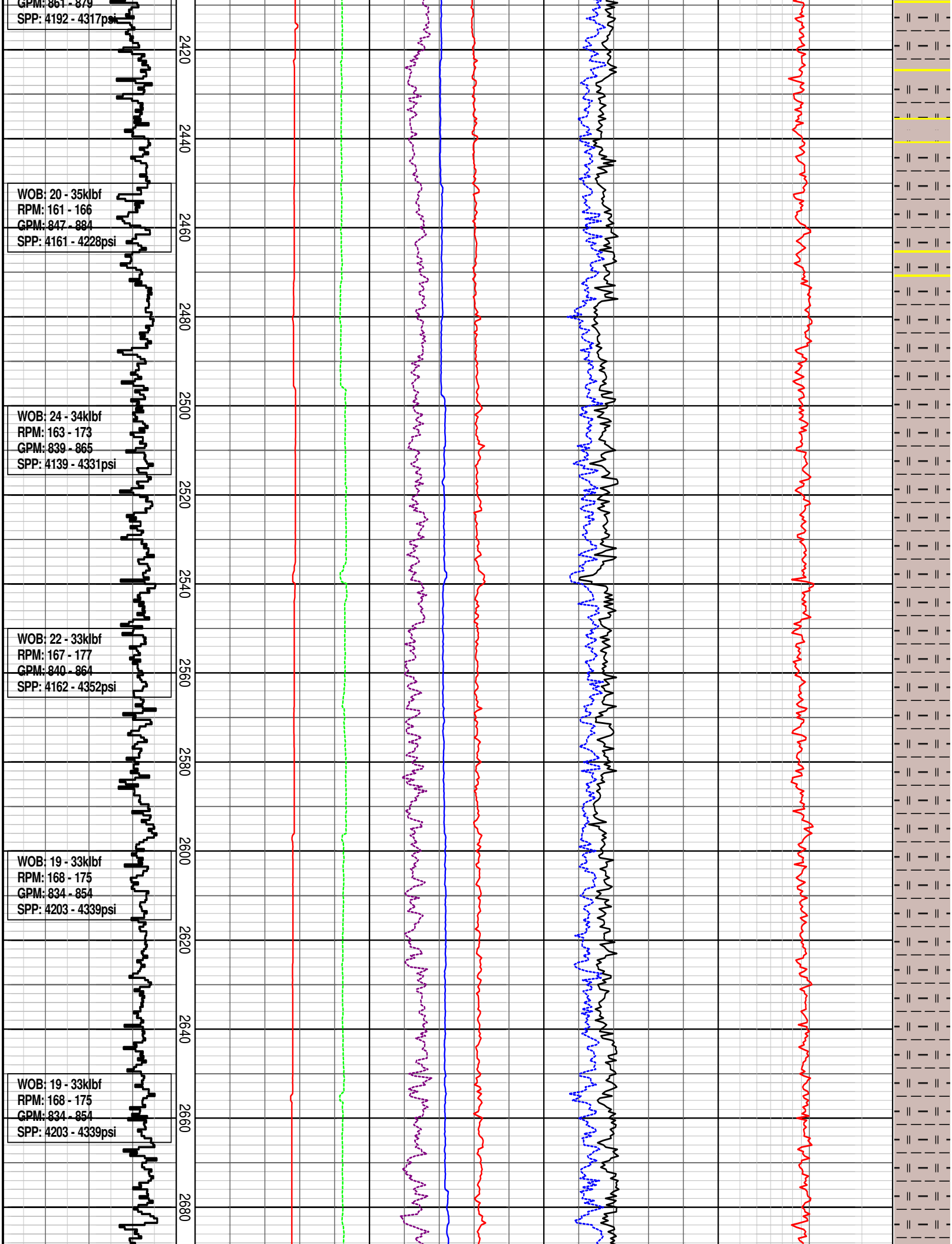
WOB: 12 - 26klbf  
RPM: 171 - 174  
GPM: 914 - 917  
SPP: 4055 - 4235psi

WOB: 26 - 43klbf  
RPM: 179 - 181  
GPM: 908 - 1053  
SPP: 4130 - 4179psi

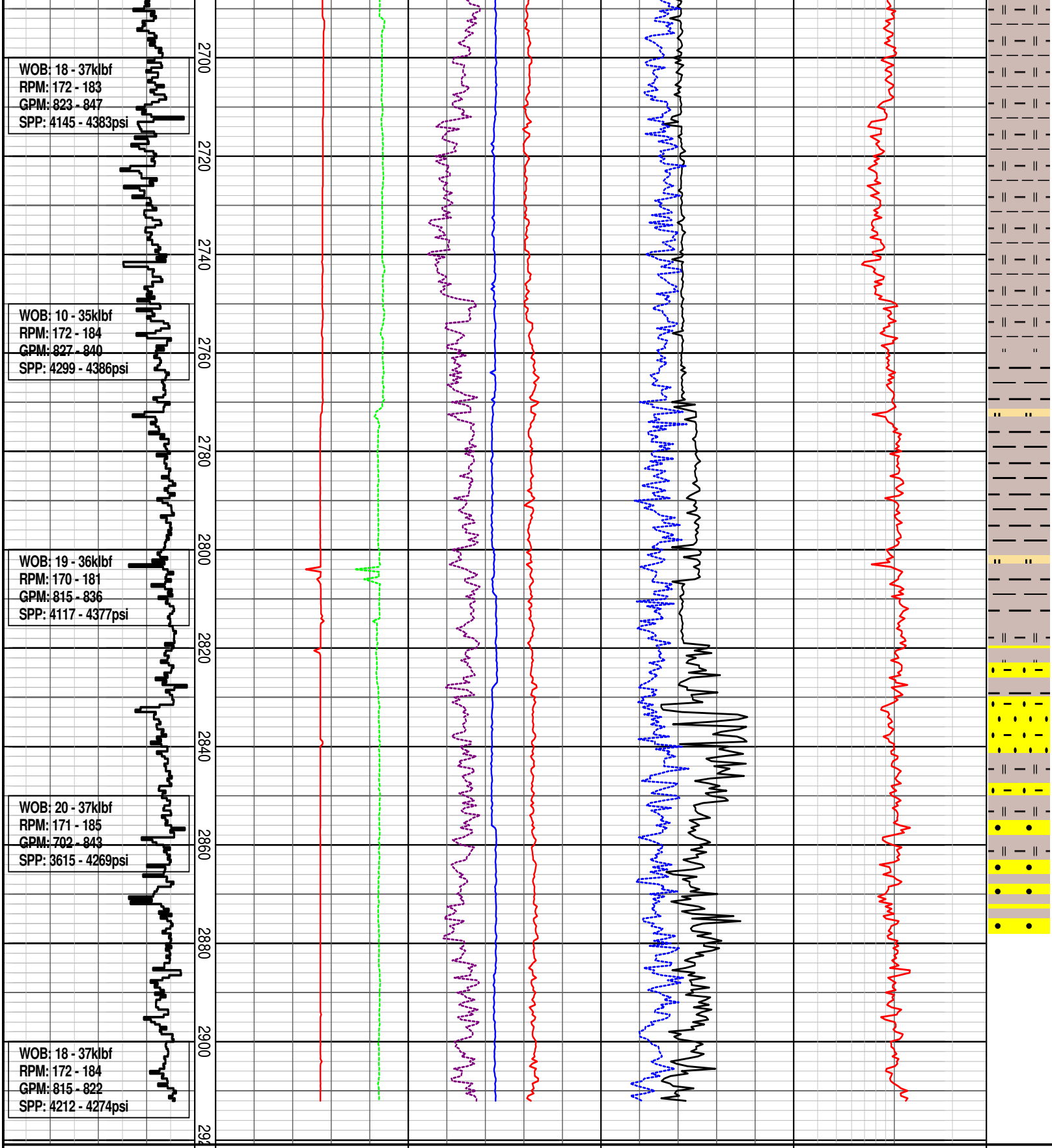












DRILLING DATA PLOT

ROP (m/hr)				MD meters 1:1000	FLOW IN (gpm)					RPM Avg					TORQUE Max (kft.lb)					DXC		INTERPRETED LITHOLOGY
200   150   100   50					300   600   900   1200   1500					80   160   240   320   400					6   12   18   24   30					0.3	3	
PUMP PRESSURE (psi)					WOB Avg (klbf)					TORQUE Avg (kft.lb)												
1000   2000   3000   4000   5000					20   40   60   80   100					6   12   18   24   30												
HOOKLOAD (klbf)																						
100   200   300   400   500																						